

Duty to Report

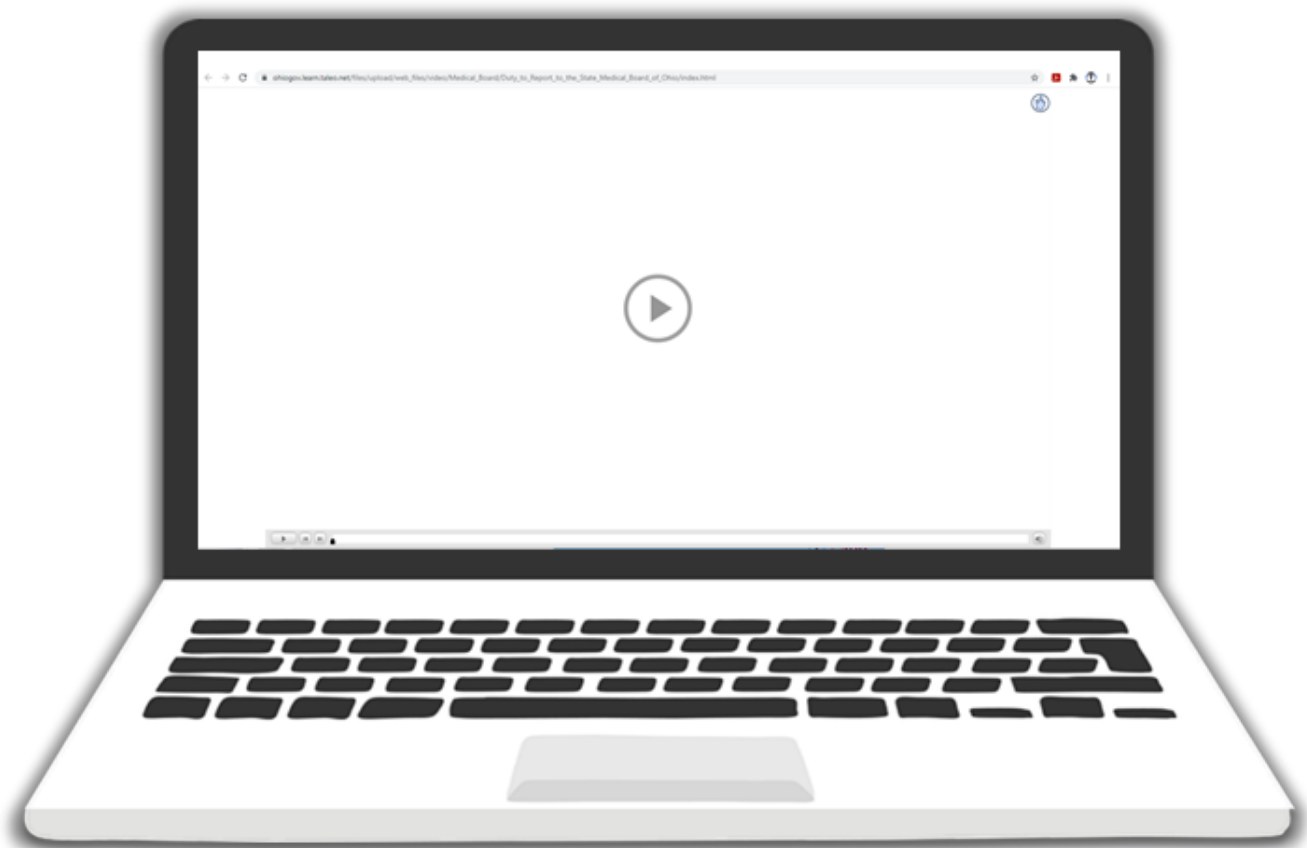
Tips & Technical Requirements

To access the video, you will need to be connected to the internet. We recommend using Mozilla Firefox, Apple Safari or Google Chrome as your browser. **Do not use Internet Explorer.**

Due to the interactive quiz questions, you will have the best experience accessing the course from a computer. You may have difficulty with the formatting if you attempt to complete the course using a phone or tablet.

To get started:

- Click on the link: [Duty to Report to the State Medical Board of Ohio](#). A new window will open, and you will see the screen below.
- Click on the play button in the middle of the screen to start the video.



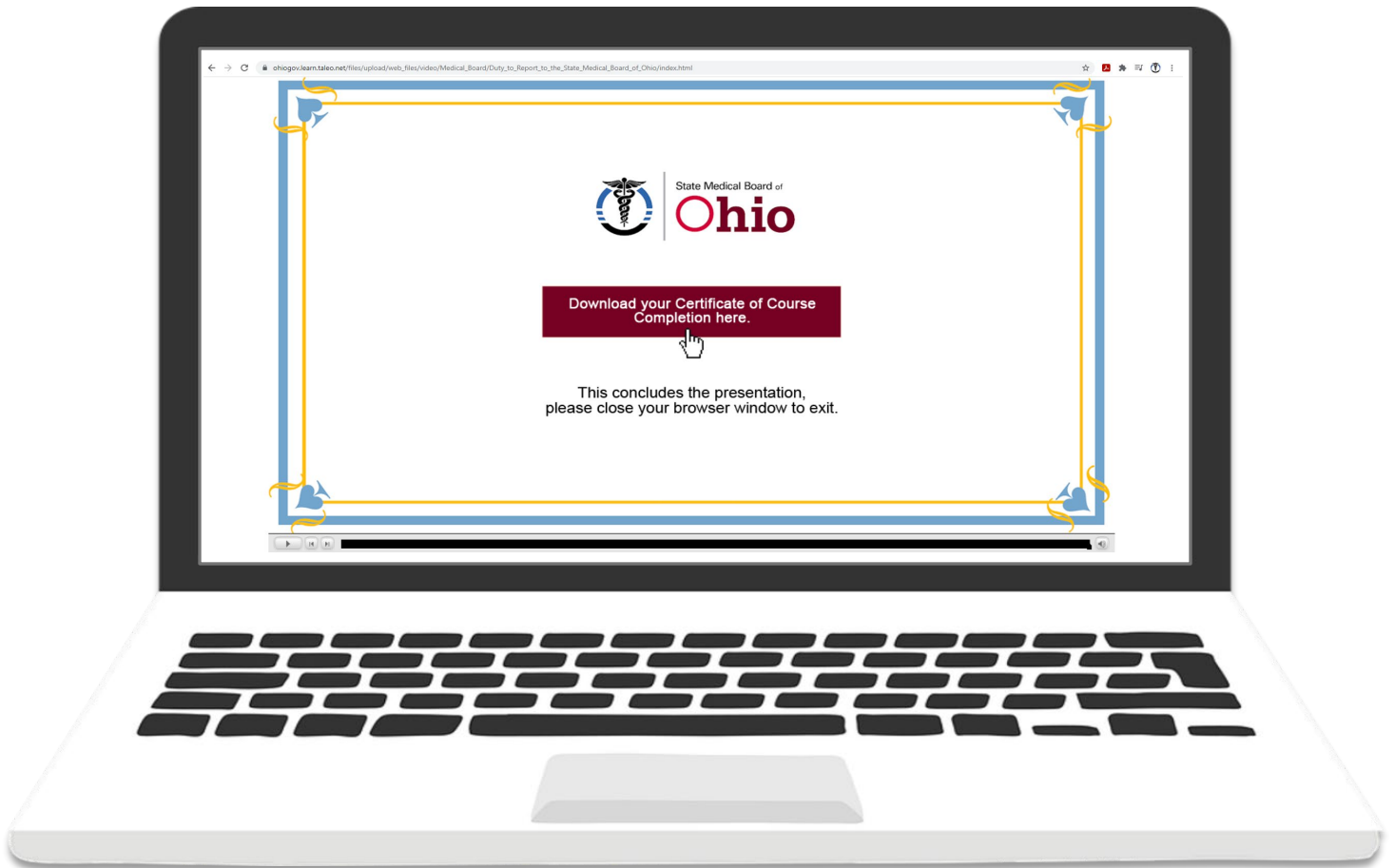
- The course is divided into three main sections with interactive questions following. Please keep in mind, it may take several seconds for the videos to load when you launch a new section. If you see the loading screen below, wait for the video to finish loading. If the video does not fully load in 60 seconds, try refreshing the page by clicking on the arrow that forms a circle in the top left corner.



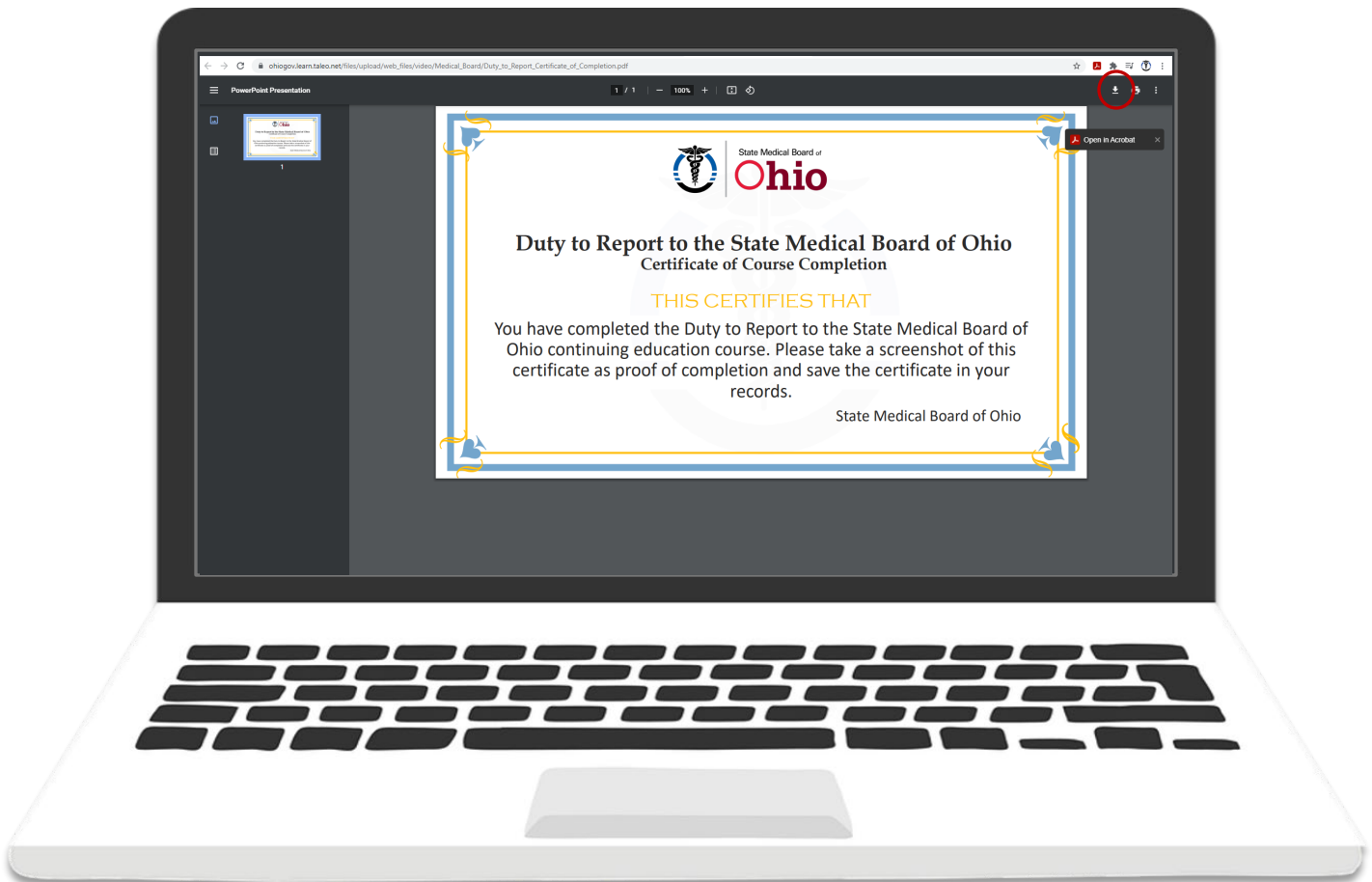
- You can use the buttons at the bottom of the screen to navigate the course:



- At the end of the course, you will be directed to a certificate of completion. Click on the red banner labeled “Download your Certificate of Course Completion Here.”



- You will need to save the document (it will save as a PDF) or print it for your records as proof of completion. To download, click on the downward arrow in the top right corner of the screen and save it to a preferred location on your computer.



- Once you have completed the course and saved your certificate, close the browser to end.

Contact Us

Visit med.ohio.gov/Duty-to-Report.

For technical support with this video, please email techsupport@med.ohio.gov.

8/3/21